



**Land & Property
Information**

ePlan User Guide for LandXML Users

Version 2.0
September 2016

Land and Property Information
lpi.nsw.gov.au

ePlan User Guide for LandXML Users

Land and Property Information, a division of the Department of Finance, Services and Innovation

GPO Box 15

Sydney NSW 2001

1300 052 637

lpi.nsw.gov.au

Copyright

© Crown in right of New South Wales through Land and Property Information 2016.



This copyright work is licensed under a Creative Commons Australia Attribution 4.0 licence,

<http://creativecommons.org/licenses/by-nd/4.0/au/>

Disclaimer

This information is correct at the date of publication; changes after the time of publication may impact upon the accuracy of the material.

Enquiries relating to this publication may be addressed to Land and Property Information

GeneralEnquiry@lpi.nsw.gov.au

Lodging a LandXML Plan

In order to lodge a LandXML plan in NSW, the ePlan account holder must be a 'level 3' user. To become 'level 3' user, the user must be a 'level 2' user (Approved to Lodge TIFF plans for registration) already and go through LandXML approval process by sending test LandXML files to LPI. If the user currently does not have an ePlan account, they will have to go through approval process for both TIFF files and LandXML files at the same time. For details on ePlan approval process, please refer to User Access section of 'ePlan Portal User Guide'.

The naming convention for LandXML file within the lodgment bundle should be as follows.

[name]_p.xml

When creating the plan lodgment bundle, TIFF documents, LandXML file and/or TIFF plan are to be zipped together into a single package. This zip package can be uploaded by clicking 'Select a zip file' button as per Figure 1 below. Once the package is uploaded, as per the second figure below, click 'Next' button.

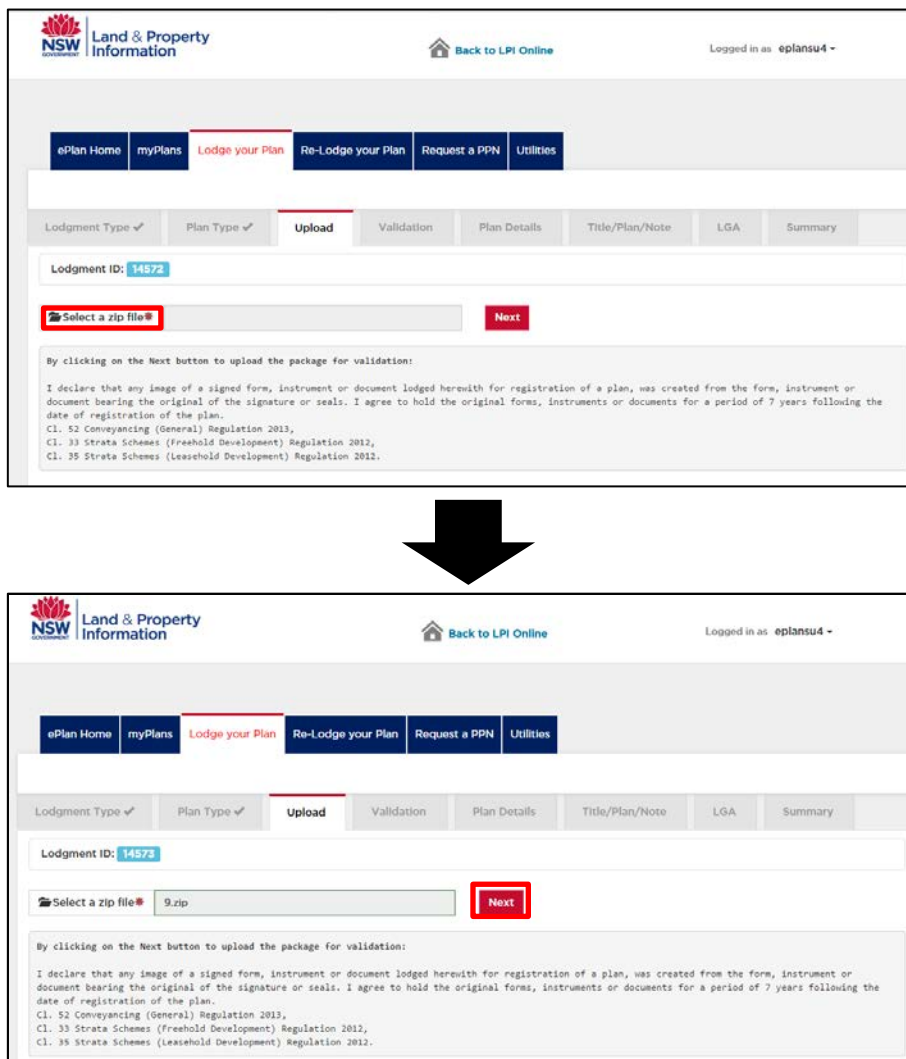


Figure 1, Upload Stage of ePlan Lodgment

The lodgment portal will automatically run Zip package validation (Figure 2) as well as LandXML validation (Figure 3) and return reports. LandXML validation report can be downloaded in PDF format by clicking 'Download LXML Report' button in Figure 3.

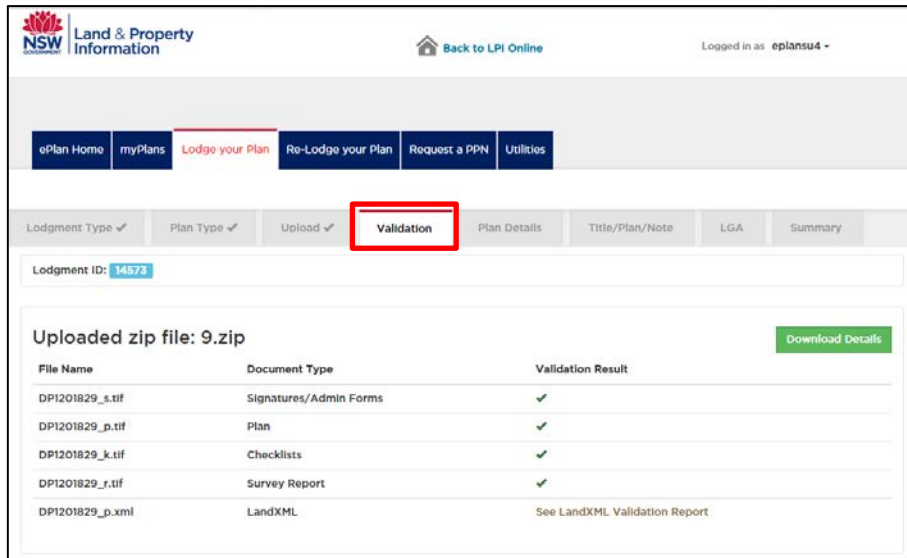


Figure 2, Zip package Validation

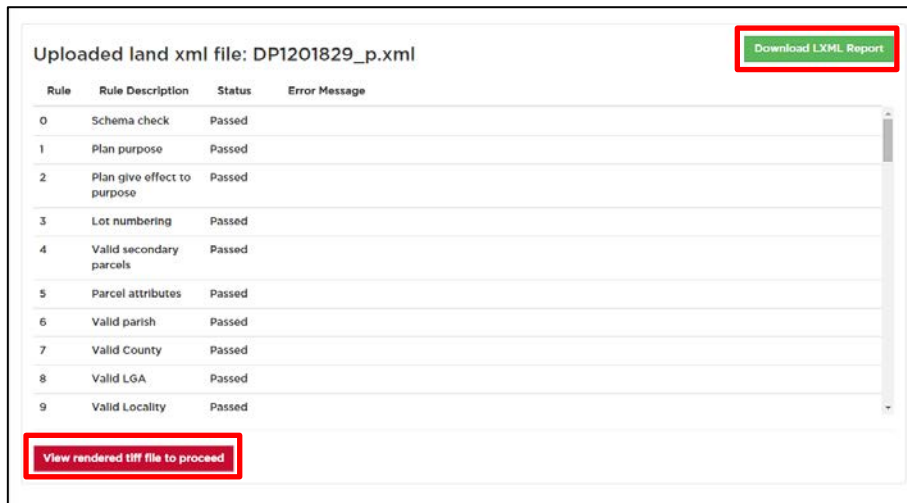


Figure 3, LXML Validation Report

To move to next step of the lodgment process, click 'View rendered TIFF file to proceed' button in Figure 3. This will allow lodging party to download and view rendered TIFF of the LandXML file lodged and trigger 'Next' button to appear on the bottom of the page (see Figure 4). If there is no drafted TIFF plan in the lodgment bundle, rendered TIFF will be added to the lodgment bundle on the click of 'Next' button. If there is no TIFF and the LandXML file cannot be rendered, lodgment has to be aborted and drafted TIFF plan must be included in the Zip package.

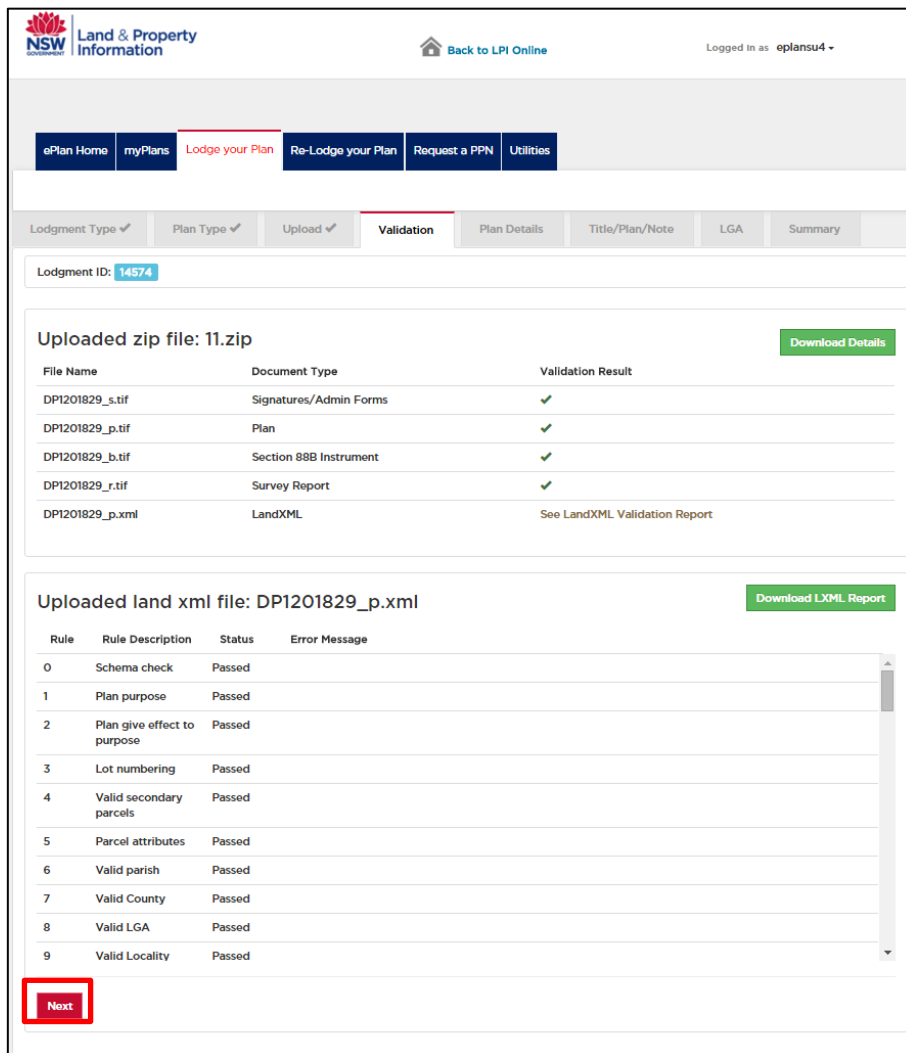


Figure 3, after the viewing of rendered TIFF

Continue with lodgment process as per normal ePlan lodgment process (See 'ePlan Portal User Guide')

Using LandXML Validation Service

LandXML Validation Service runs numerous automated checks on uploaded LandXML file. Service can be accessed through Utility tab of ePlan Lodgment Portal and it can be used to validate the LandXML file prior to the lodgment (see Figure 5). This will assist the user with creating a LandXML file that complies with NSW LandXML standard. User can navigate to the file to be validated by clicking the 'Select an XML file' button. Once file is selected, click 'Next' button to run the validation.

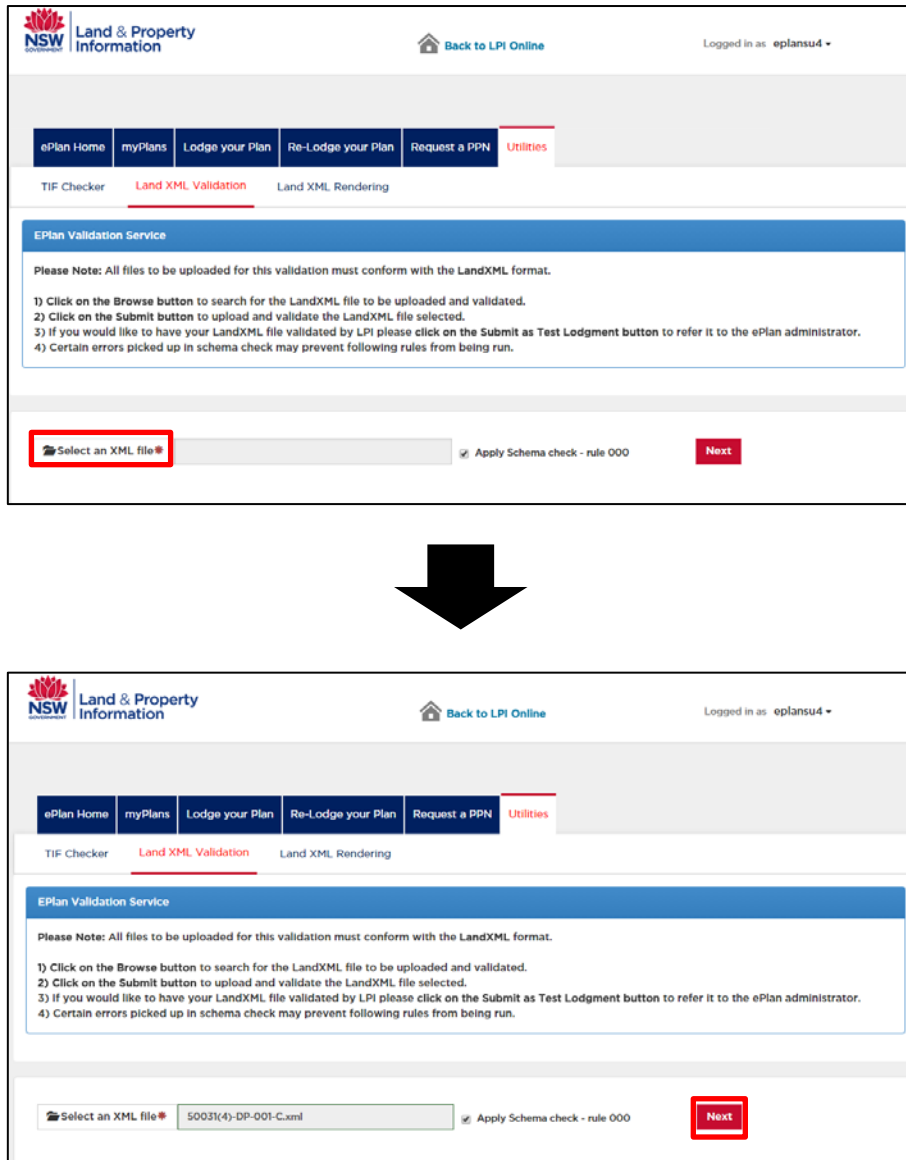


Figure 4, LandXML Validation Service

This will produce a validation report as per Figure 6 below. LandXML validation report can be downloaded in PDF format by clicking ‘Download LXML Report’ button.

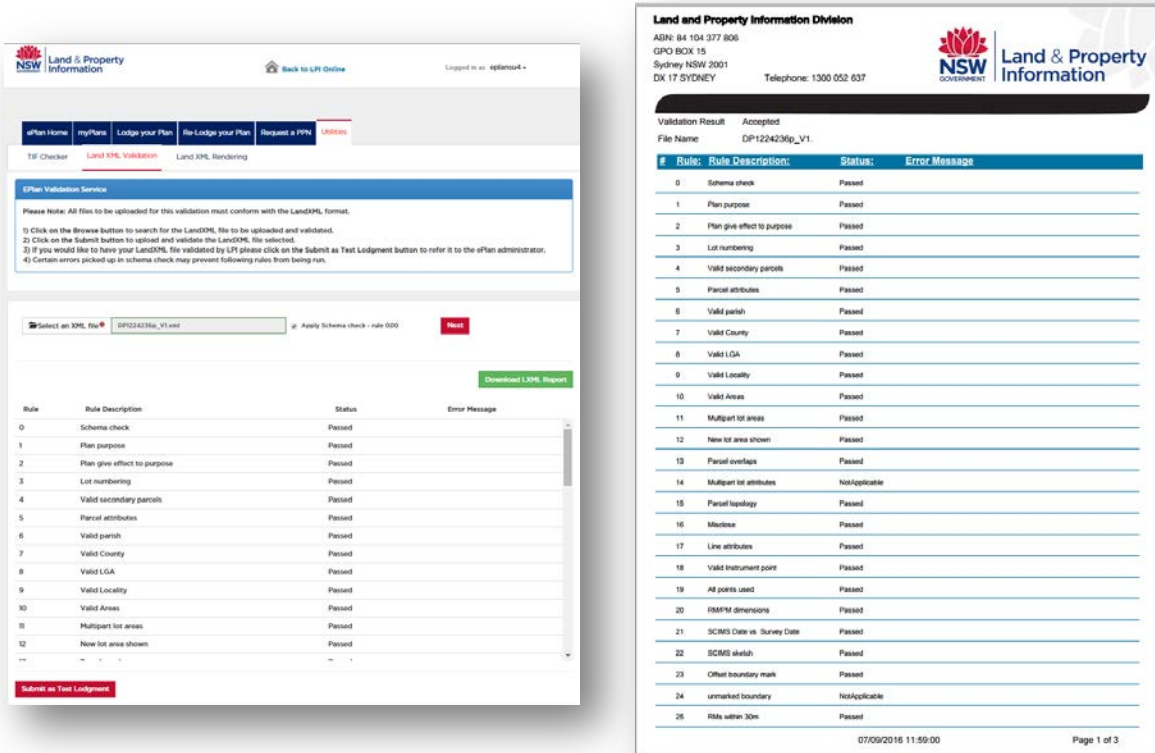


Figure 5, LandXML Validation Report (Web page: left & PDF: right)

When Schema check (Rule 0) fails, validation service will not run rest of the rules as per Figure 7 below. User can still try to run the rest of the validation rules by unticking the ‘Apply Schema check’ and click ‘Next’ button again.

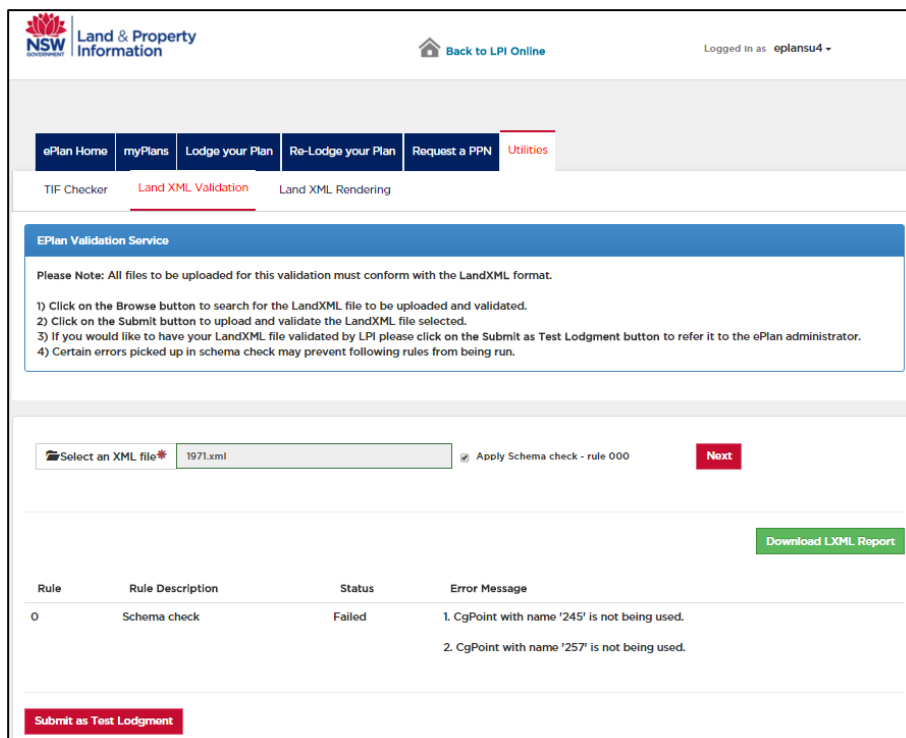


Figure 6, Schema check fail

This will reproduce a report without the schema check as per Figure 8 below. User may not be able to run the validation when there are crucial issues at the schema level. If the user is having a difficulty with Validation Service, they should contact ePlan LandXML team. The contact details can be found on following site: http://www.lpi.nsw.gov.au/plan_and_title_registration/landxml

The screenshot shows the 'EPlan Validation Service' interface. At the top, there is a navigation bar with tabs for 'ePlan Home', 'myPlans', 'Lodge your Plan', 'Re-Lodge your Plan', 'Request a PPN', and 'Utilities'. Below this, there are sub-tabs for 'TIF Checker', 'Land XML Validation', and 'Land XML Rendering'. The main content area has a blue header 'EPlan Validation Service' and a 'Please Note' section with instructions. Below the notes, there is a file upload section with a text box containing '1971.xml', a checkbox for 'Apply Schema check - rule 000', and a 'Next' button. A 'Download LXML Report' button is also present. The main part of the interface is a table with the following data:

Rule	Rule Description	Status	Error Message
1	Plan purpose	Passed	
2	Plan give effect to purpose	Passed	
3	Lot numbering	Passed	
4	Valid secondary parcels	Passed	
5	Parcel attributes	Passed	
6	Valid parish	Passed	
7	Valid County	Passed	
8	Valid LGA	Passed	
9	Valid Locality	Passed	
10	Valid Areas	Passed	
11	Multipart lot areas	Passed	
12	New lot area shown	Passed	
13	Parcel overlaps	Passed	
..

At the bottom of the interface, there is a 'Submit as Test Lodgment' button.

Figure 7, Validation report without Schema check

Using LandXML Rendering Service

LandXML Rendering Service automatically drafts a plan from the LandXML file on NSW standard plan form in TIFF format. Service can be accessed through Utility tab of ePlan Lodgment Portal and it can be used to render the LandXML file prior to the lodgment (see Figure 9). User can navigate to the file to be validated by clicking the ‘Select an XML file’ button. Size of the plan form can be selected between ‘A2’ and ‘A3’ in Page Size in figure below. Once the file is selected and size is set, click ‘Next’ button.

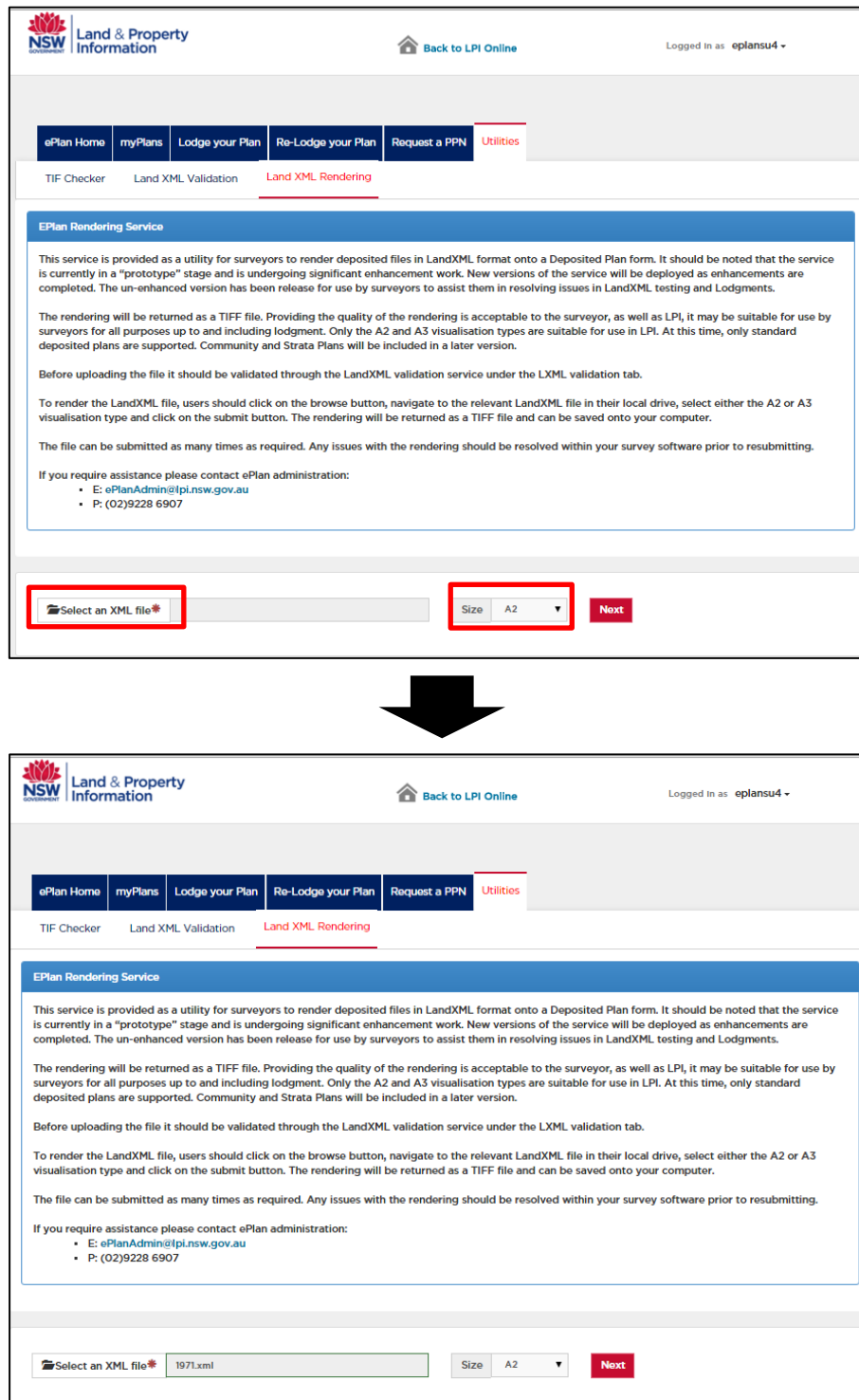


Figure 8, LandXML Rendering Service

When the rendering is successful as per Figure10, service will return a TIFF plan to be downloaded. Click 'Download Tiff' button and save the file to an appropriate folder. When Rendering Service fails to render, check the LandXML file by running the LandXML Validation Service. If the issues cannot be rectified, contact ePlan LandXML team. The contact details can be found on following site: lpi.nsw.gov.au/plan_and_title_registration/landxml.

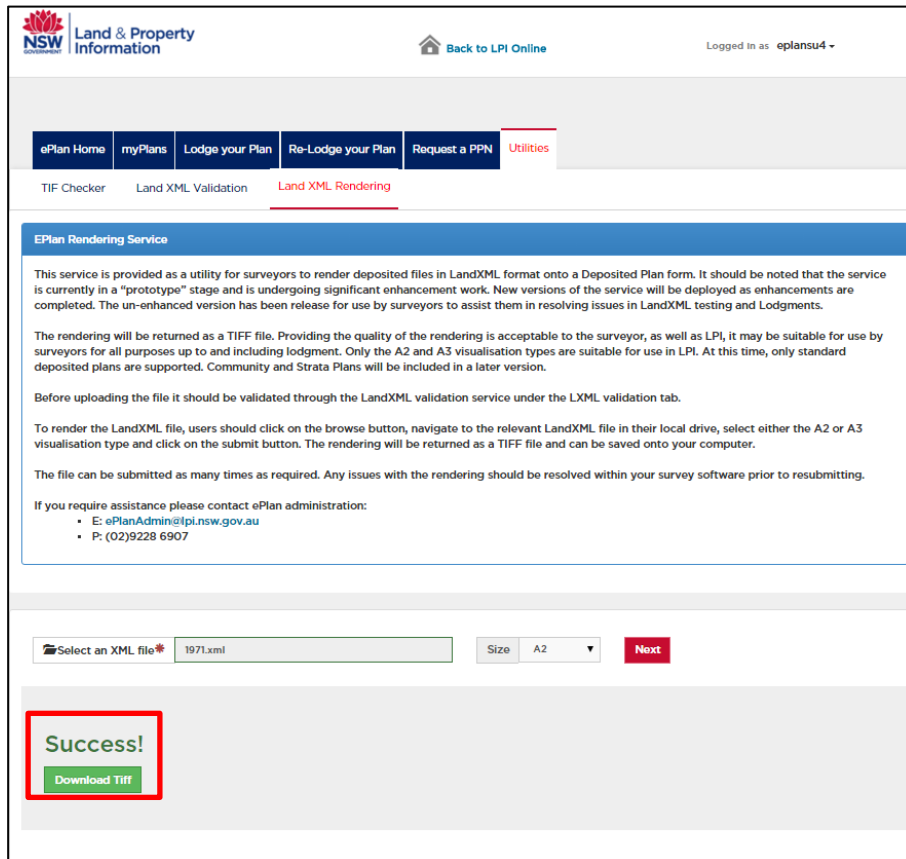


Figure 9, Successful Rendering

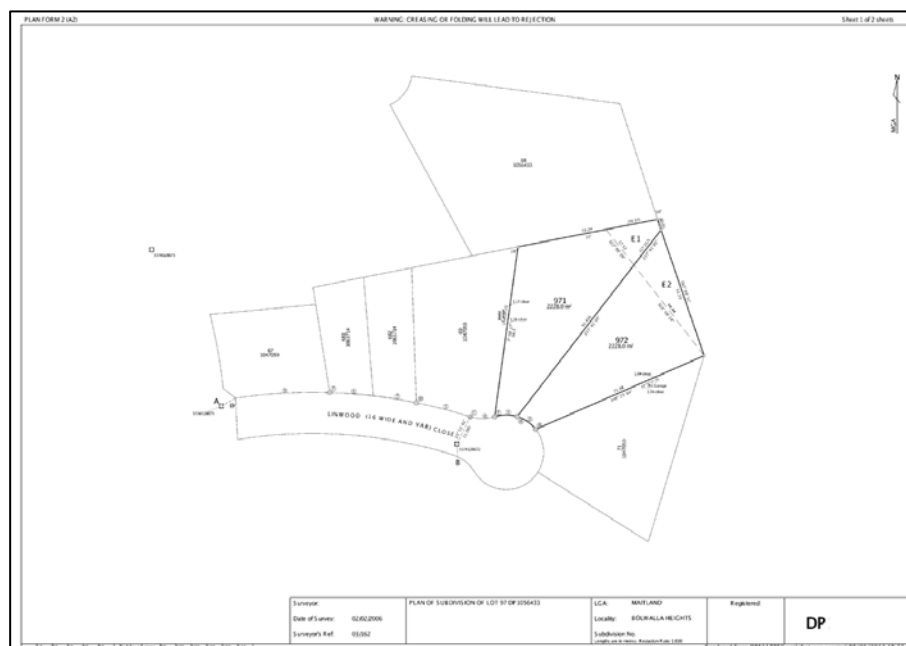


Figure 10, Rendered TIFF